

About

LURIA NEUROSCIENCE INSTITUTE (LNI) is dedicated to advancing and disseminating knowledge about the brain and the mind. Bridging the gap between clinicians, educators, neuroscientists, and the general public through a vigorous exchange of ideas and information is central to our mission. LNI is named after the great neuropsychologist Alexander Luria.

LURIA NEUROSCIENCE INSTITUTE ANNOUNCES TWO WORKSHOPS ABOUT THE BRAIN AND THE MIND

1. Frontal Lobes in Health and Disease
2. Laterality in Health and Disease

9 CE Credits / NBCC Clock Hours are being offered for each of the workshops for most mental health professions (more information can be found on www.lninstitute.org)

Each program is a **day-long event** (9 hours) offered on weekends.

All workshops are held at the **Helmsley Park Lane Hotel, 36 Central Park South, New York, NY 10019.**

ABOUT THE INSTRUCTOR



The courses are taught by Elkhonon Goldberg, Ph.D., ABPP. Goldberg is a cognitive neuroscientist, a practicing neuropsychologist, and an educator who lectures worldwide. He is a Clinical Professor, Department of Neurology, NYU School of Medicine and a Diplomate of The American Board of Professional Psychology in Clinical Neuropsychology.

Goldberg authored research papers on cortical organization, hemispheric specialization, frontal lobes, memory, traumatic brain injury, dementias, schizophrenia, and other topics. Goldberg's books *The Executive Brain* (2001), *The Wisdom Paradox* (2005), and *The New Executive Brain* (2009) have been translated into 16 languages. He coauthored *The SharpBrains Guide to Cognitive Fitness* (2013) and is the Chief Scientific Adviser of www.sharpbrains.com. Goldberg is a recipient of The Copernicus Prize for "contributions to interdisciplinary dialogue between neurosciences and neuropsychology," and The Tempos Hominis medal "for international medical sciences education." He is a foreign member of The Venetian Institute of Science, Literature and Arts. Elkhonon Goldberg was a close associate of Alexander Luria.

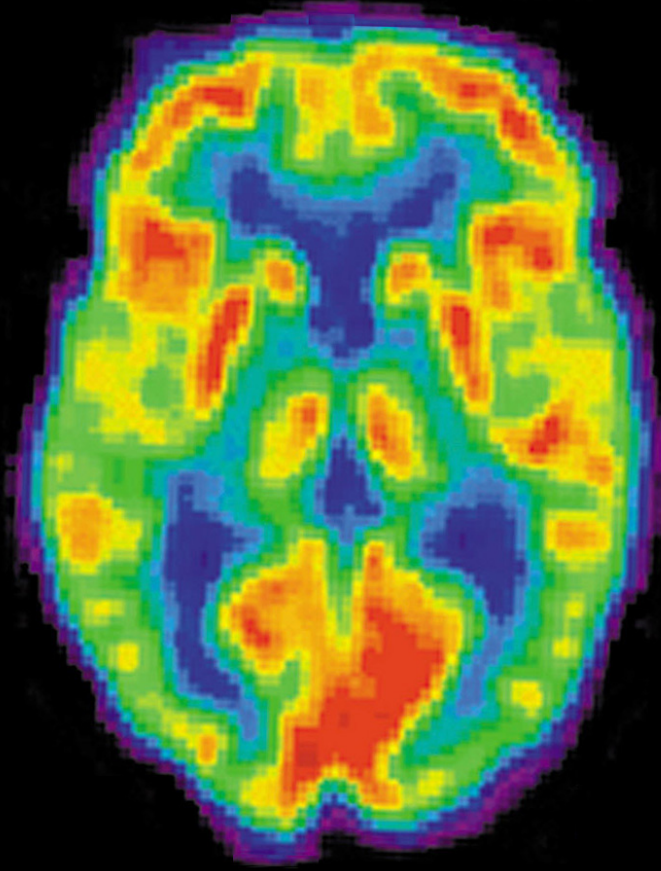
THE HUMAN BRAIN AND BRAIN DISORDERS WORKSHOPS OFFERED IN 2015



Luria Neuroscience Institute

315 West 57th Street, Ste 401
New York, NY 10019

Phone: 800-906-5866 / Fax: 212-246-8916
www.lninstitute.org



THE HUMAN BRAIN AND BRAIN DISORDERS

One-day workshops taught by
Elkhonon Goldberg, Ph.D., ABPP



Luria Neuroscience Institute

Advancing and Disseminating Knowledge
about the Brain and the Mind

Workshop

Frontal Lobes in Health and Disease

CE Credits / NBCC Clock Hours: 9 for a day-long event.

Location: The Helmsley Park Lane Hotel,
36 Central Park South, New York, NY 10019.

Date: February 7, 2015 (Saturday).

Time: 8am - 6pm (with a lunch break and two short breaks).

This **day-long workshop** includes a comprehensive review of the frontal lobes and executive functions across the life span, and of the various forms that frontal-lobe dysfunction may take across a wide range of clinical disorders.

The number of participants will be limited to enable active audience participation. The following topics will be addressed:

1. Executive functions and frontal-lobe functions: are they the same?
2. Components of executive functions (planning, impulse control, working memory, and others).
3. Novel approaches to understanding the frontal-lobe functions.
4. Executive functions, laterality, and sex differences.
5. Regulation of emotions: frontal lobes and amygdala.
6. Executive functions in development and aging.
7. Executive dysfunction in neurodevelopmental disorders (ADHD, Tourette's Syndrome).
8. Executive dysfunction in dementias (Alzheimer's disease, Lewy body dementia, Fronto-temporal dementia).
9. Executive dysfunction in cerebrovascular disorders (CVA, aneurisms).
10. Executive dysfunction in traumatic brain injury (reticulo-frontal disconnection syndrome).
11. Executive dysfunction in neuropsychiatric disorders.
12. Executive dysfunction in movement disorders (Parkinson's disease, Huntington's disease).

To register online or for more information visit
www.lninstitute.org

Workshop

Laterality in Health and Disease

CE credits / NBCC Clock Hours: 9 for a day-long event.

Location: The Helmsley Park Lane Hotel,
36 Central Park South, New York, NY 10019.

Date: February 21, 2014 (Saturday).

Time: 8am - 6pm (with a lunch break and two short breaks).

This **day-long workshop** includes a comprehensive review of the current approaches to hemispheric specialization across the life span, and of the various forms aberrant lateralization may take across a wide range of clinical disorders.

The number of participants will be limited to enable active audience participation. The following topics will be addressed:

1. Where the traditional notions of hemispheric specialization got it wrong.
2. Functional laterality and brain anatomy.
3. Novel approaches to hemispheric specialization.
4. How the two hemispheres develop and age.
5. Laterality and gender and handedness differences.
6. Laterality and regulation of emotions.
7. Laterality and learning disabilities (dyslexias vs NVLD).
8. Laterality and dementias: Is fronto-temporal dementia lateralized?
9. Laterality and striatal disorders (Parkinson's disease and Tourette's syndrome).
10. Major cerebrovascular disorders and cerebral hemispheres.
11. Laterality and neuropsychiatric disorders: Schizophrenia and the left hemisphere.
12. Laterality and differential functional breakdown threshold.

To register online or for more information visit
www.lninstitute.org

Info

Future Programs

The Luria Neuroscience Institute will be offering a wide range of educational programs about the brain, cognition and neurocognitive disorders in various formats. The topics will include dementias, traumatic brain injury, neurodevelopmental and neuropsychiatric disorders, and other topics of interest to mental health professionals. Please continue to visit our website for updates.

For more information visit www.lninstitute.org

Fax / Mail Registration Form 2015

[] FRONTAL LOBES IN HEALTH AND DISEASE
 [] LATERALITY IN HEALTH AND DISEASE

For one workshop \$425; for two workshops \$800.

Full Name: _____

Billing Address: _____

City: _____ State: _____ ZIP: _____

Phone: _____ E-mail: _____

Check (in US funds) [] payable to Luria Neuroscience Institute

Credit Card [] Visa [] Mastercard [] American Express [] Discover

Amount to charge to my credit card \$ _____ US

Credit card number _____

Credit card expiration date _____ / _____ (month / year)

CVV (card security code: 3 digits on the back of MC / Visa / Discover or 4 digits on the front of AmEx card) _____

Signature _____

Mail to 315 West 57th Street, Ste 401, New York, NY 10019 or fax 2122468916